

BRITISH COLUMBIA GULF ISLANDS CEMETERIES

Canadian Cataloguing in Publication Data
Main entry under title
British Columbia Gulf Islands cemeteries



BRITISH COLUMBIA GENEALOGICAL SOCIETY
P.O. BOX 94371, RICHMOND, B.C., CANADA V6Y 2A8

BRITISH COLUMBIA
GULF ISLANDS
CEMETERIES

Canadian Cataloguing in Publication Data

Main entry under title:

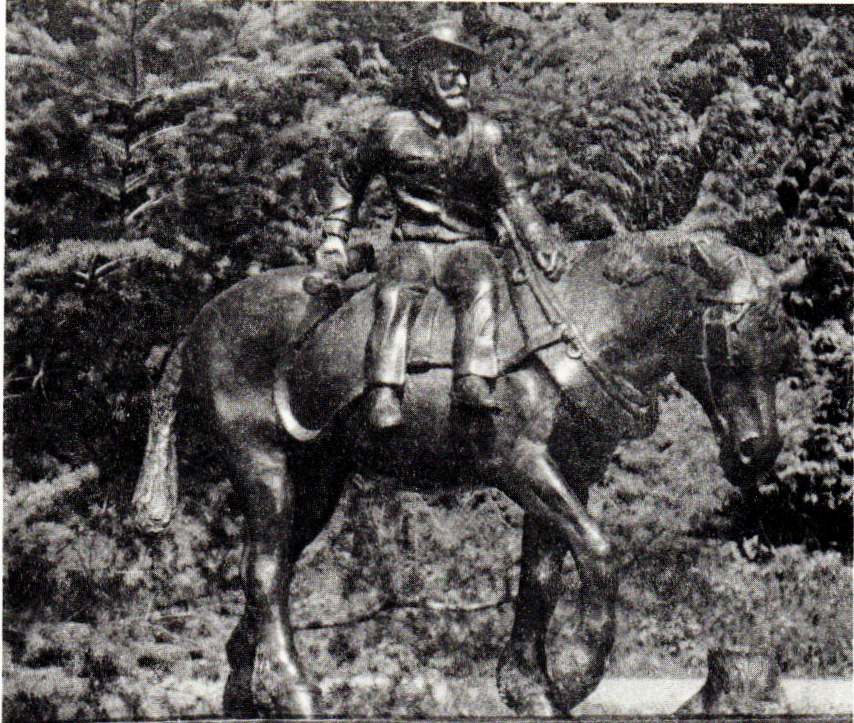
British Columbia Gulf Islands cemeteries

ISBN 1-895031-00-1

1. Cemeteries--British Columbia--Gulf Islands.
2. Gulf Islands (B.C.)--Genealogy. 3. Registers of births, etc.--British Columbia--Gulf Islands.
4. Inscriptions--British Columbia--Gulf Islands.
- I. British Columbia Genealogical Society.

FC3845.G8Z54 1989 929.5'09711'34 C89-090288-7
F1089.G8B74 1989

BRITISH COLUMBIA GENEALOGICAL SOCIETY
P.O. BOX 94371, RICHMOND, B.C., CANADA V6Y 2A8



CANADIAN MONK
A BRONZE STATUE TO THE HONOR OF THE
MONK WHO FIRST ENTERED THE MOUNTAINS
AND OPENED A ROUTE TO THE GREAT PLAINS
IN 1806. THE STATUE WAS SET UP BY THE
CITY OF CALGARY IN 1906.



CANADIAN PIONEER

WASHINGTON GRIMMER TOOK OF THE LAND IN 1867 AND
CLEARED THE VIRGIN FOREST.
HERE HE RAISED A FAMILY. HELPED START A SCHOOL
AND OPENED A POST OFFICE. IN THE EARLY YEARS HIS
ONLY CONTACT WITH THE OUTSIDE WORLD WAS BY ROWBOAT.
B.C. HISTORICAL SOCIETY

1977

RALPH SKETCH - SCULPTER

PREFACE

This volume is comprised of the various cemeteries of the Gulf Islands. You will find some of the same family in various cemeteries on different islands. At one time there being no undertaker on the island where they lived they would be transported to an island where there was one.

The Grimmer Family is a good example. Mr Washington Grimmer and his family lived on Pender Island, but he is buried on Mayne Island. His statue (Frontispiece) is on Pender Island. Mrs Washington Grimmer (Elizabeth Auchterlonie) is buried as are their children, Percy & Nellie (Hamilton). The Georgeson family are also buried on different islands.

By checking the Index on pp 105 - 120, you will be able to co-ordinate the various families.

ACKNOWLEDGEMENTS

I would like to thank the many members of the British Columbia Genealogical Society who assisted with this project. Especially: Agnes Bacon, Shirley Howe, Margaret McCallum, Tony Lavin, Gloria Coulson, Beryl (Hoepfner) Meechen, Linda Blackman, and the many typists, proof-readers, collators, Lois Richardson, and especially Lois's son Derek Richardson, who although not a member of our Society has given so much help with our computer input.

from the Editor and Compiler

Margaret (Dolly) Hannay
Margaret (Dolly) Hannay
Mem. No. 893

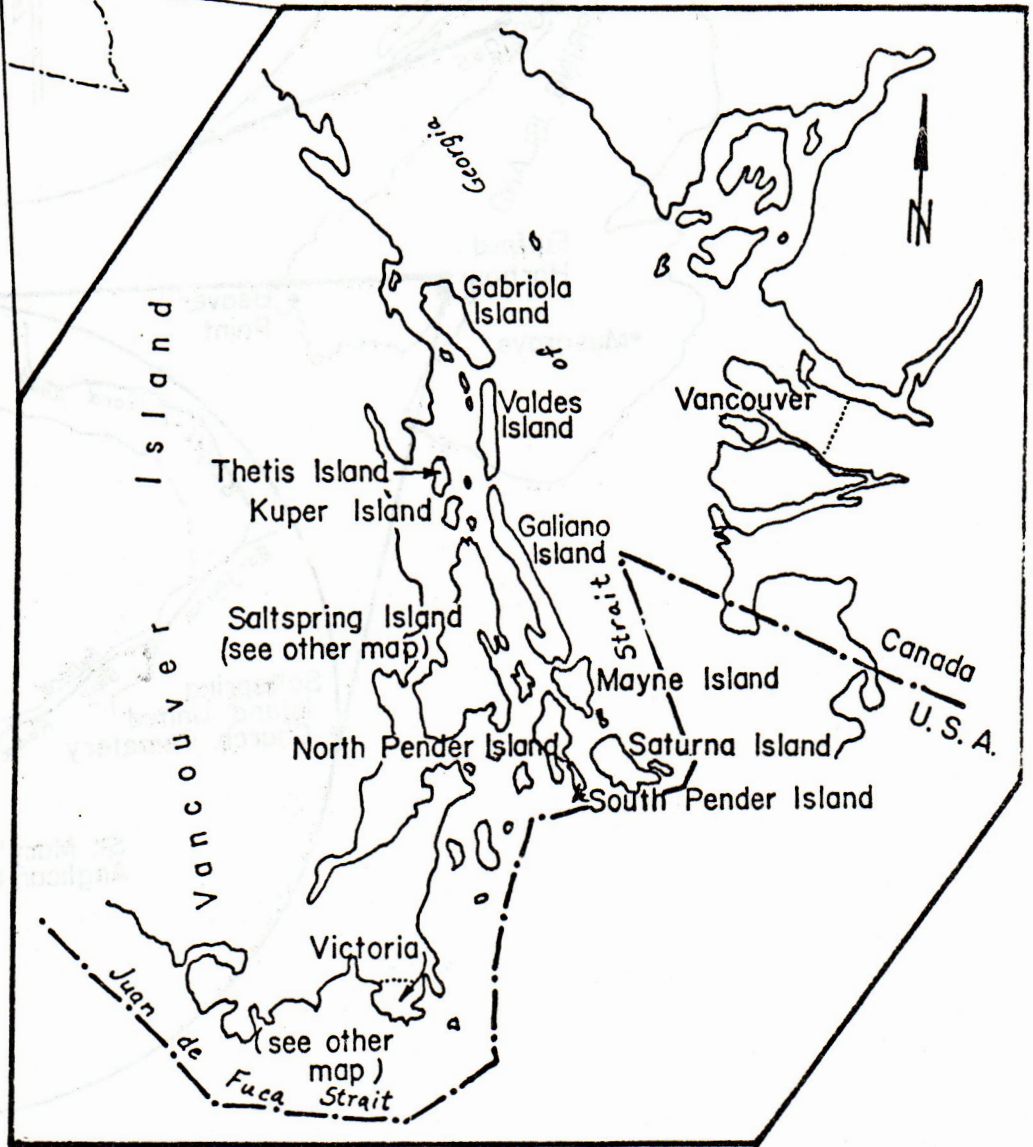
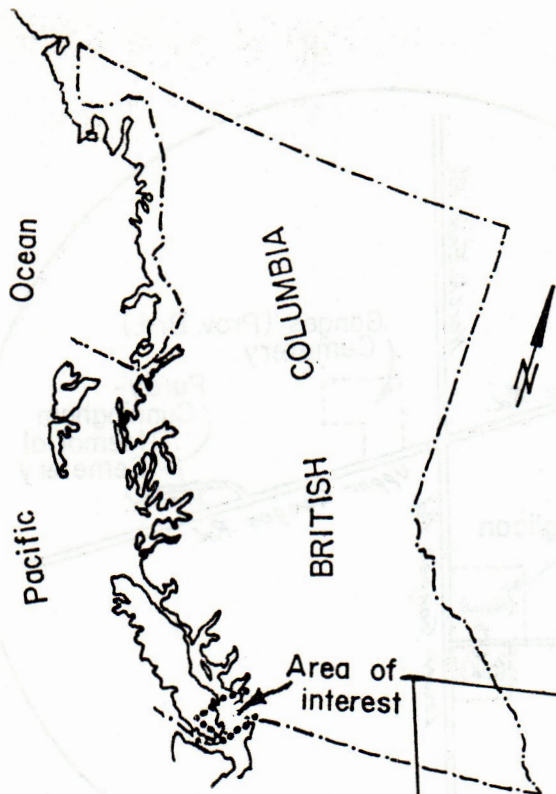
CONTENTS

Title Page	i
Frontispiece	ii
Preface	iii
Acknowledgements	iii
Page of Contents	iv
Maps	v
Gabriola Island (Gabriola Island)	1
Galiano Island (St. Mary Anglican)	13
Mayne Island (Community Cemetery)	19
Salt Spring Island, Fulford Harbour.	
St. Mary's Anglican	31
St. Paul's Catholic	42
United Church	45
Salt Spring Island, Ganges	
Ganges (Provincial)	47
Purdy - Cunningham	63
St. Mark's Anglican	65
Pender Island	86
San Juan, Washington, U S of A (Mt Young)	98
Saturna Island	99
Thetis Island (St. Margaret's)	102
Index	105

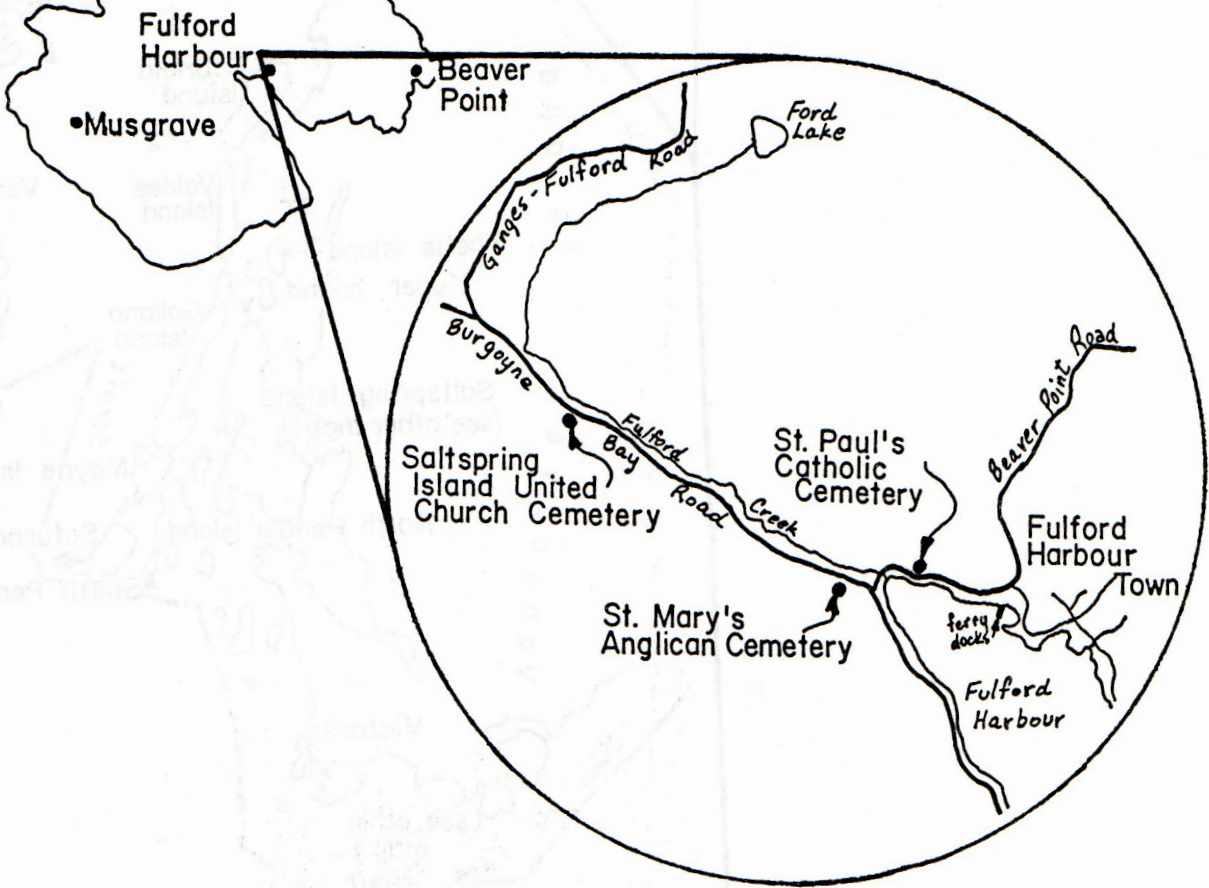
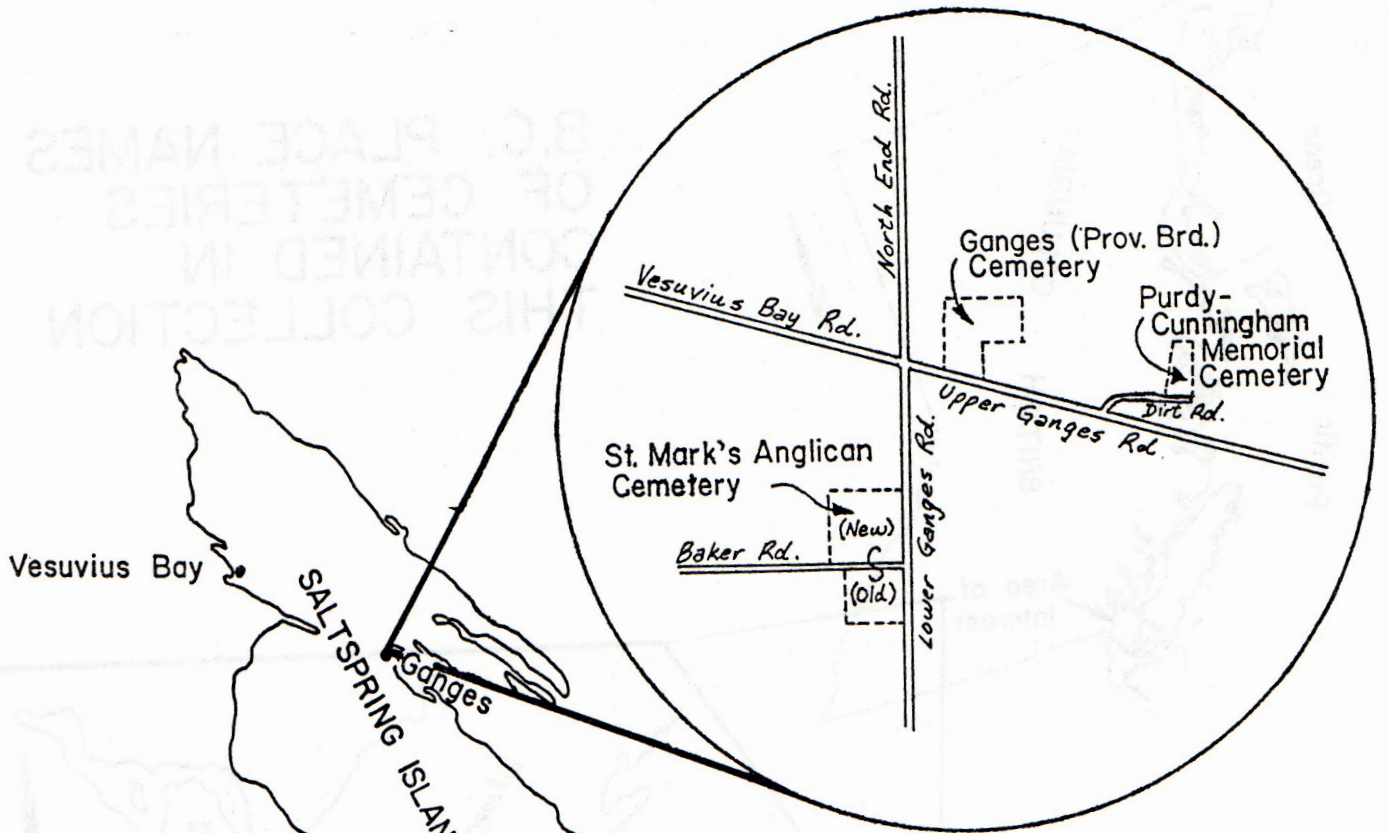
Title Page: Picture of Wood carved tombstone , see Pender Island Cemetery (Lewis J Powell) p. 95

Frontispiece: Picture of statue on Pender Island. Mr Washington Grimmer, Early Pioneer. Mr Grimmer was buried on Mayne Island. (See pp. 23,29)

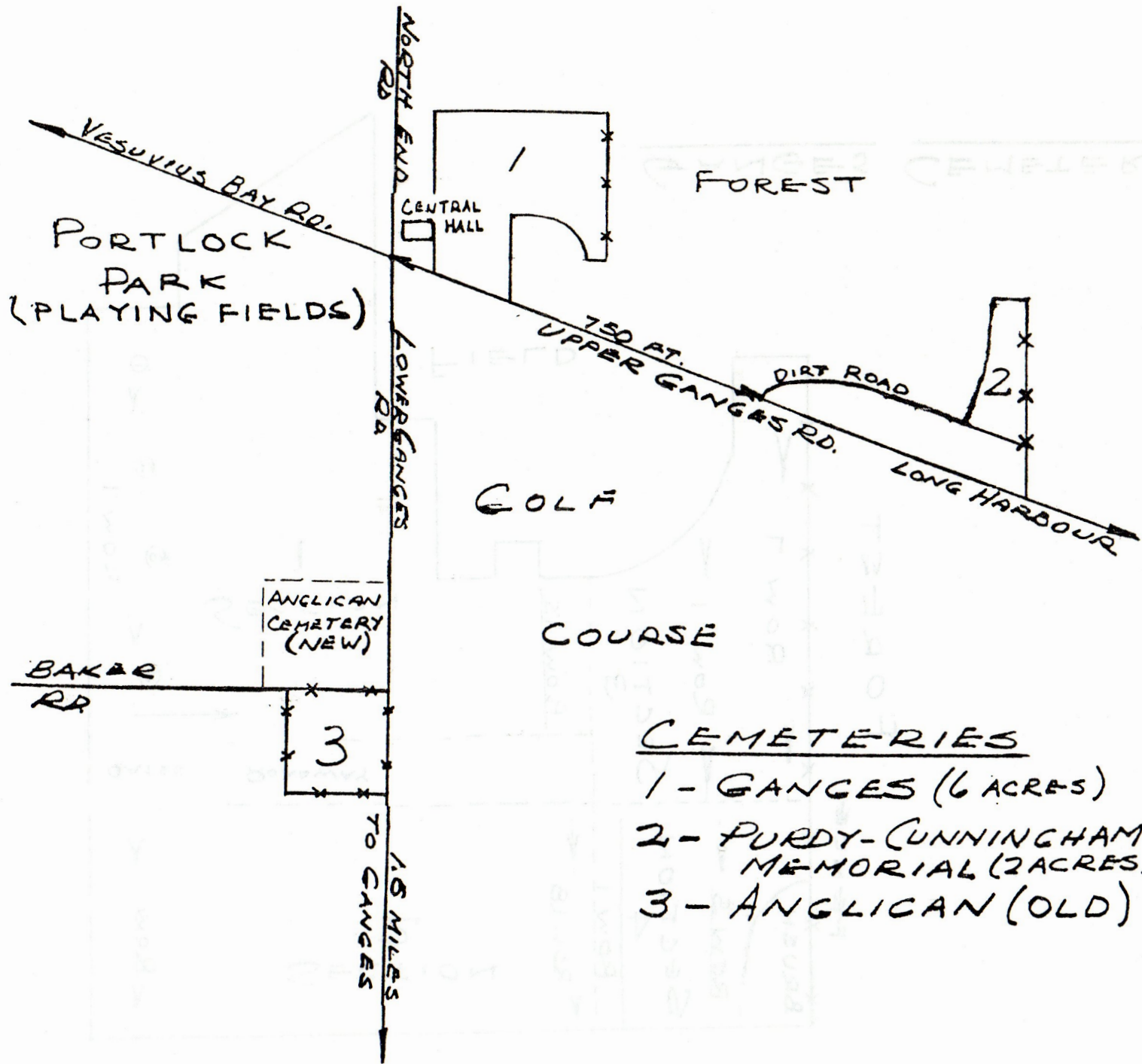
B.C. PLACE NAMES OF CEMETERIES CONTAINED IN THIS COLLECTION



SALTSRING ISLAND CEMETERIES

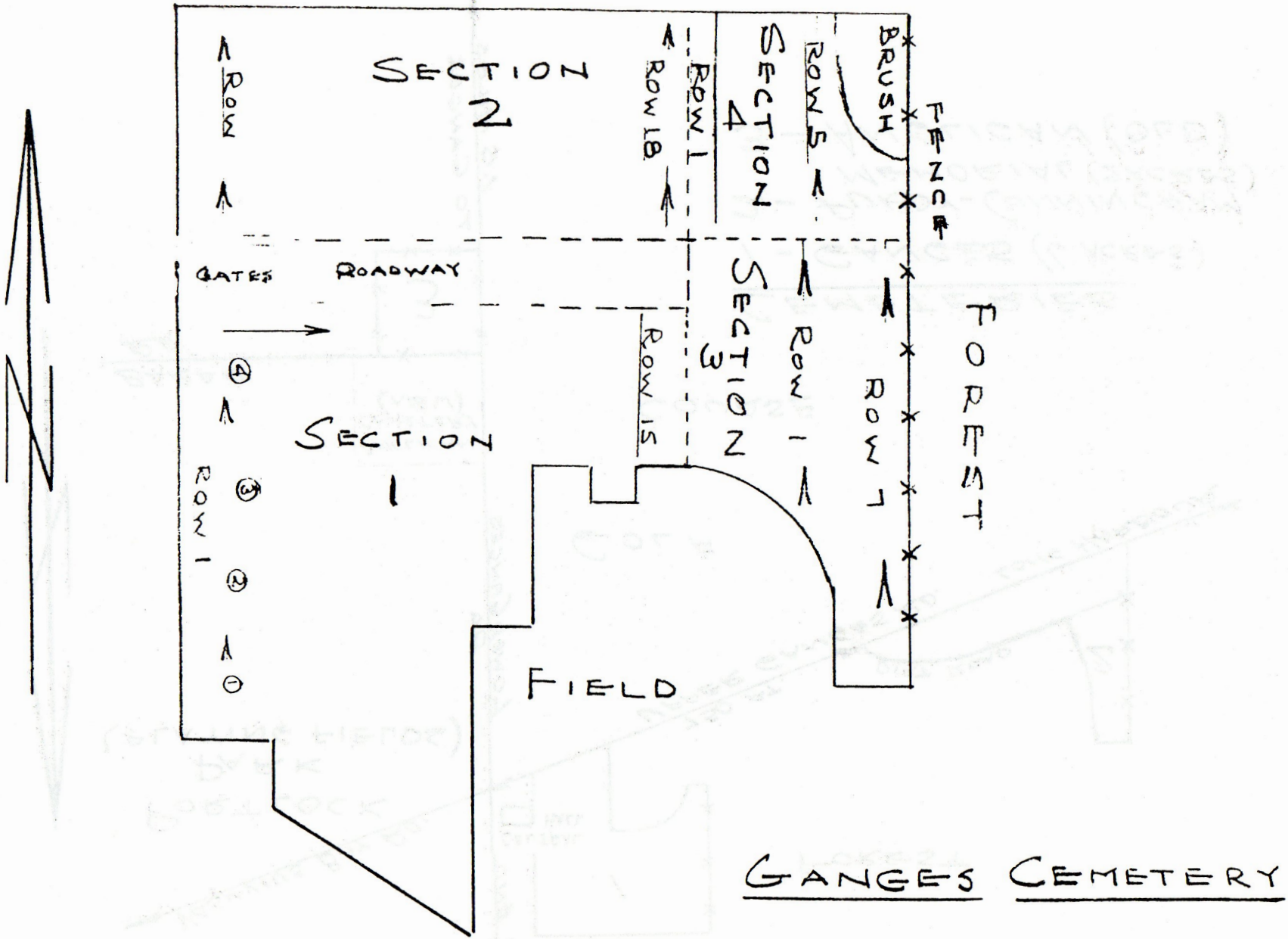


SALTSPRING ISLAND CEMETERIES

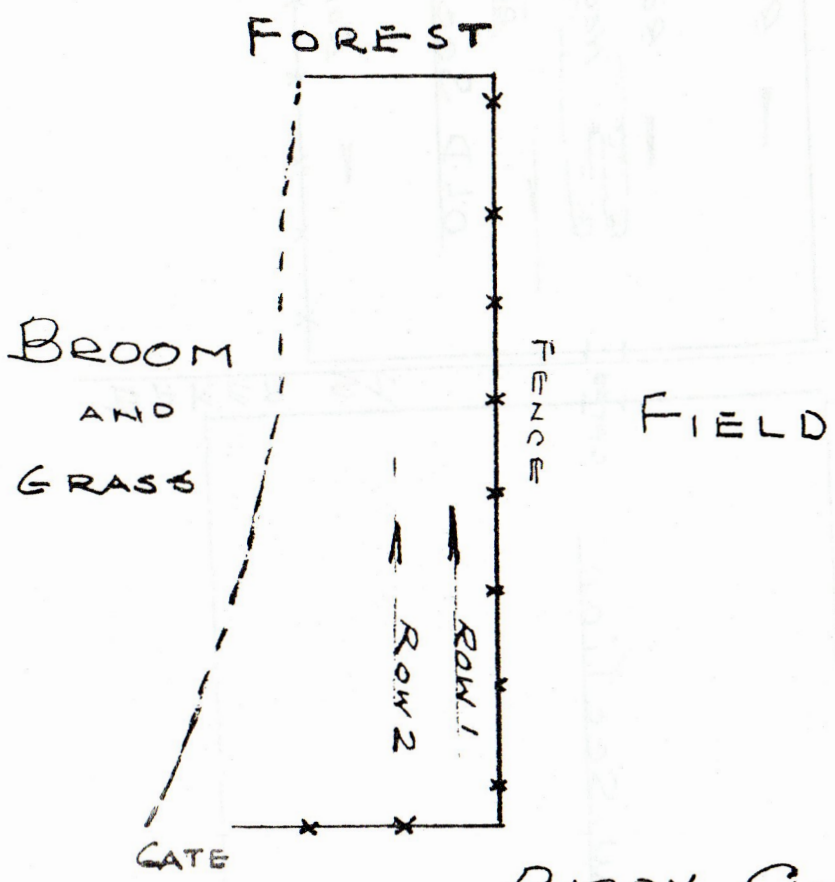


CEMETERIES

- 1 - GANGES (6 ACRES)
- 2 - PURDY-CUNNINGHAM MEMORIAL (2 ACRES)
- 3 - ANGLICAN (OLD)



GANGES CEMETERY



PURDY-CUNNINGHAM
MEMORIAL
CEMETERY

CEMETERY
SECTION

ANGLICAN
CEMETERY

